

EDGE WIRE SADDLES & GROMMET EDGING



HEWSE Hinged Edge Wire Saddle

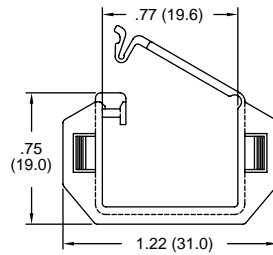
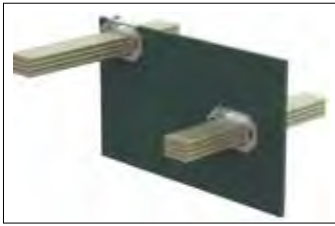


Figure 1

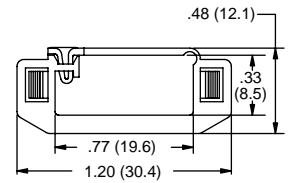


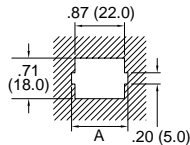
Figure 2

Specifications:

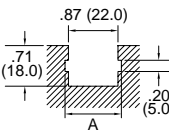
- Material: UL94 V-2 Nylon 6/6
- Color: Natural

Features:

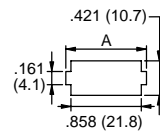
- Routes cables and protects them from sharp edges
- Installed in a mounting slot; edge or through-hole
- Hinged latch allows retrofitting into pre-existing applications



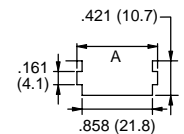
Thru Hole Panel Cut-Out



Edge Hole Panel Cut-Out



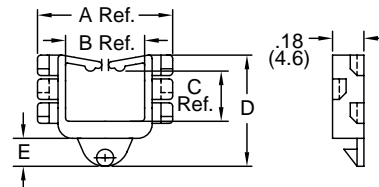
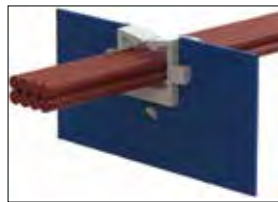
Thru Hole Panel Cut-Out



Edge Hole Panel Cut-Out

Item No.	Figure	Panel Thickness		A		Depth		Bulk Pack Qty.
		In	mm	In	mm	In	mm	
HEWSE-22-01	1	0.020 - 0.063	0.5 - 1.6	0.980	25.0	0.260	6.6	1000
HEWSE-25-01	2	0.031 - 0.063	0.8 - 1.6	0.980	25.0	0.260	6.6	1000
HEWSE-25-01	2	0.079	2.0	1.020	26.0	0.260	6.6	1000

LEWSE Edge Wire Saddle

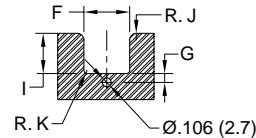


Specifications:

- Material: UL94 V-2 Nylon 6/6
- Color: Natural

Features:

- Locking pin in mounting base provides firm grip to the board
- Protects wires from sharp edges
- Available in four different sizes



Recommended Panel Cut-Out

Item No.	Panel Thickness	A Ref. In	B Ref. In	C Ref. In	D In	E In	F In	I In	G In	R. J In	R. K In	Bulk Pack Qty.
LEWSE-14-01	0.031-0.063	0.780	0.460	0.290	0.640	0.160	0.551	0.484	0.106	0.079	0.039	1000
LEWSE-19-01	0.031-0.063	1.060	0.660	0.590	0.980	0.150	0.756	0.831	0.100	0.079	0.039	1000
LEWSE-21-01	0.031-0.063	1.130	0.660	0.580	0.980	0.150	0.827	0.827	0.100	0.079	0.060	1000
LEWSE-27-01	0.031-0.063	1.370	0.900	0.910	1.310	0.120	10.630	1.140	0.106	0.079	0.060	1000

MCCG Metal Cushioned Grommet



Specifications:

- Material: 304 Stainless Steel, Coated with Black Nylon 1
- Cushion: UL94 V-0 TPE (60 Shore D)
- Temperature Rating: -40°F (-40°C) to 285°F (140°C)
- The MCCGF is the more flexible of the two due to the design

Features:

- Dielectric Strength: 1500 volts @ 60Hz
- Flexible polymer cushion gives additional abrasion protection
- Flexible polymer cushion give additional abrasion protection
- Sold in 100 foot reels that can be cut to length using metal shears Item No. MCGS-1

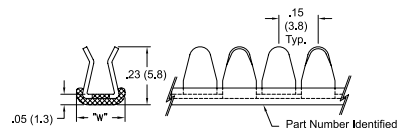


Figure 1

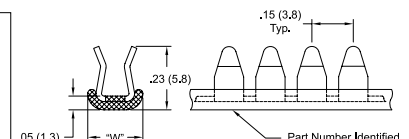


Figure 2

Item No.	Figure 2	Approval	Fits Panel Thickness		Width W		Roll Length
			In	mm	In	mm	
MCCG-1N	MCCGF-1N	AI	0.029 - 0.045	0.7 - 1.1	0.190	4.8	100
MCCG-2N	MCCGF-2N	AI	0.044 - 0.056	1.1 - 1.4	0.190	4.8	100
MCCG-3N	MCCGF-3N	AI	0.055 - 0.069	1.4 - 1.7	0.190	4.8	100
MCCG-4N	—	AI	0.069 - 0.090	1.7 - 2.3	0.230	5.8	100
MCCG-6N	—	AI	0.113 - 0.130	2.9 - 3.3	0.230	5.8	100